



15 Clifford Street South Golden Beach NSW

4 2 2

This beautiful Queenslander situated in a quiet street is ideally located.

The home has timber floors throughout and high ceilings. Spacious dining and living areas feature with a pot belly fire.

The house has many ornate and old features which add to the charm of this property.

3 bedrooms are in the main house with a modern bathroom.

Enjoy the tropical landscaped gardens and privacy at rear

[For full version visit the website](https://www.fullerandco.com.au/8292450)

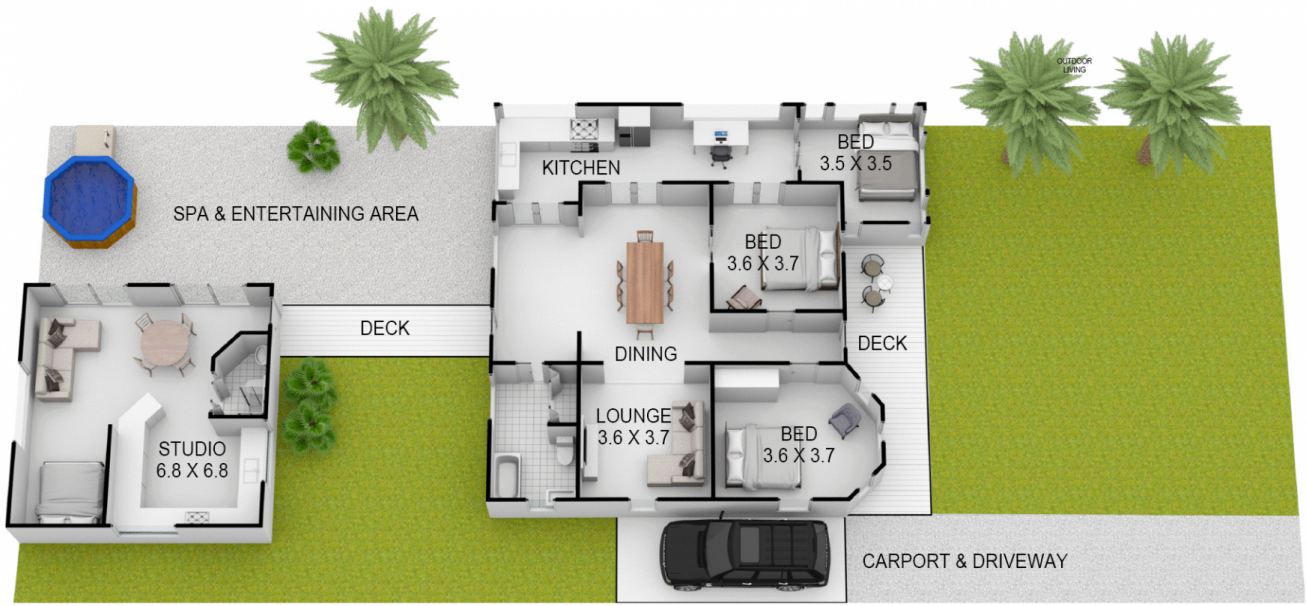
Type : House
Land Size : 639 sqm
View : <https://www.fullerandco.com.au/8292450>



Gail Fuller Jp
02 5642 0177






APPROXIMATE AREAS
INTERNAL FLOOR SPACE - 164m²



15 Clifford Street South Golden Beach

Floor Plan Disclaimer: Media Drive (MD) floor plans / site plans are intended as an approximate guide only. No representations or warranties of any nature are given or intended and any person using this information other than as a guide should always rely on their own enquiries. Media Drive property marketing services / 0413979054 / Photography, Floor plans, Video, Aerial photography / www.mediadrive.com.au

 4  2  1

