



Unit 20/58 Armstrong Street Suffolk Park NSW

3 2 2

Located a short 400m walk to the beach and 200m to the Suffolk Park shops, this well appointed townhouse is in the Beachside complex.

There are two levels with downstairs comprising of the generous kitchen & open plan living area, which flows out to the landscaped courtyard. There is single lockup garage with internal access & laundry room with toilet.

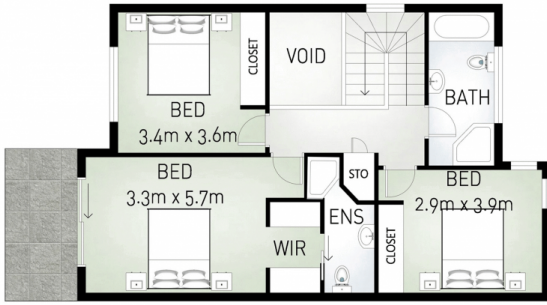
The home features on the upper level 3 spacious bedrooms with built-ins and ceiling fans. The master bedroom has an en-suite, WIR and private leafy outlook

[For full version visit the website](https://www.fullerandco.com.au/829246)

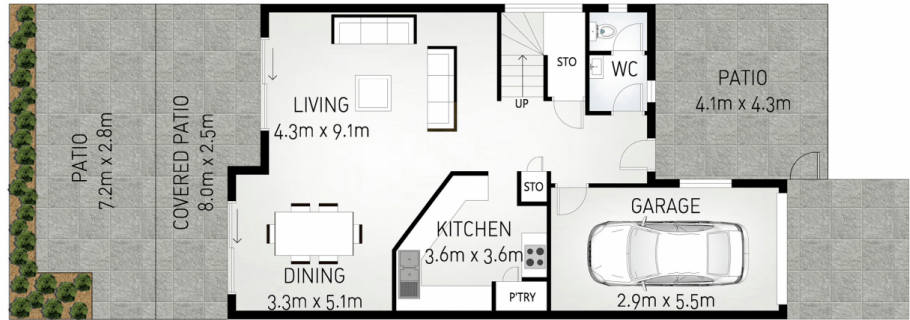
Type : Townhouse
Building Size : 132 sqm
View : <https://www.fullerandco.com.au/829246>
3



Scot Fuller
02 5642 0177



FIRST FLOOR



GROUND FLOOR



Scale in metres. Indicative only. Dimensions are approximate. All information contained herein is gathered from sources we believe to be reliable. However we cannot guarantee its accuracy and interested persons should rely on their own enquiries.

20/58 Armstrong Street, Suffolk Park

3 Bedrooms | 2 Bathrooms | 1 Car
Total: 132 sq.m. | Ext: 72 sq.m. | Total: 204 sq.m.

