



## 2 General Stubbs Drive Rosebank NSW

8 5 6

Set in the hills of the beautiful Byron Bay hinterland this gorgeous elevated north facing property is private and peaceful.

Situated on 93 acres with abundant creeks and dams , two approved additional cottages with strong rental returns and approval for an additional three cabins. Eco tourism expansion on this property has enormous potential.

Currently bio-dynamic registration is held on the property for the macadamia plantation which is an additional income stream. There are 2,500 trees on approximately 35 acres.

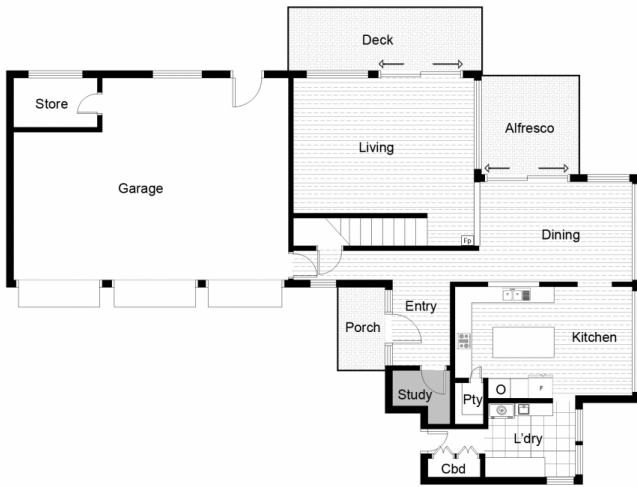
There is also an opportunity to subdivide off 15 hectares

[For full version visit the website](https://www.fullerandco.com.au/829246)

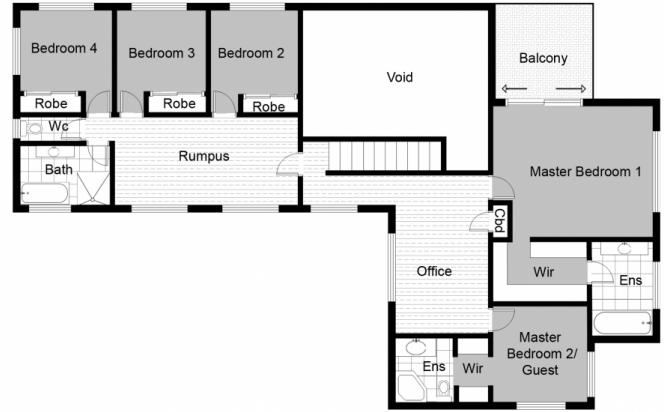
**Type** : Rural  
**Building Size** : 307 sqm  
**Land Size** : 376358 sqm  
**View** : <https://www.fullerandco.com.au/829246>  
5



**Scot Fuller**  
02 5642 0177



LOWER LEVEL



UPPER LEVEL

INT: 307.00m<sup>2</sup>  
EXT: 46.50m<sup>2</sup>  
GARAGE: 68.90m<sup>2</sup>

This floor plan including furniture, fixture measurements and dimensions are approximate and for illustrative purposes only.  
Boxbrownie.com gives no guarantee, warranty or representation as to the accuracy and layout. All enquiries must be directed to the agent, vendor or party representing this floor plan.

2 General Stubbs