



### 33 Byron Street Bangalow NSW

Head back in time to the historic beginnings of Bangalow village with this beautiful original commercial building from 1908.

The building has been meticulously maintained to keep it true in design and character as one of a row of four brick terraces built in the main street of Bangalow. It was known as the The Strand.

Downstairs has hosted an array of uses from jewellers, watchmakers, a Japanese antique store and highly acclaimed restaurants and now a cafe.

The council approved restaurant/cafe consists of a main

[For full version visit the website](https://www.fullerandco.com.au)

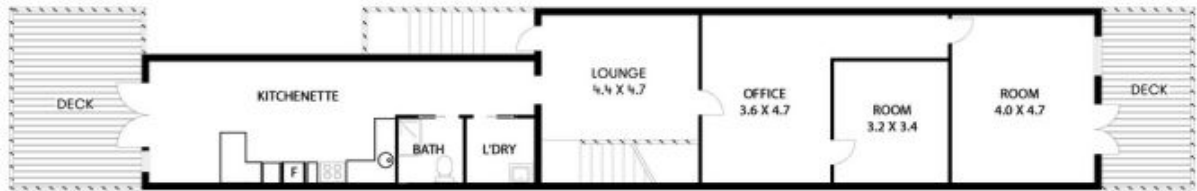
**Type** : Retail  
**Building Size** : 238 sqm  
**Land Size** : 161 sqm  
**View** : <https://www.fullerandco.com.au/8292489>



**Gail Fuller Jp**  
02 5642 0177



**Scot Fuller**  
02 5642 0177



FIRST FLOOR



GROUND FLOOR

33 BYRON STREET

BANGALOW

APPROXIMATE AREAS

INTERNAL FLOOR SPACE - 200m<sup>2</sup>

EXTERNAL FLOOR SPACE - 101m<sup>2</sup>

Floor Plan Disclaimer: Malle Drive (MD) floor plans / site plans are intended as an approximate guide only. No representations or warranties of any nature are given or intended and any person using this information other than as a guide should always rely on their own enquiries. Malle Drive property marketing services / 0413303554 / Photography: Floor plans, Videos, Aerial photography / www.malldrivere.com.au

