



10/21-25 Cemetery Road Byron Bay NSW

3  1  2 

Located in a prime position being just a short bike ride from town, a walk to the famous Roadhouse cafe and 1.3km to the beach sits this lovely home set up high in the tree tops.

Type : House
Land Size : 670 sqm
View : <https://www.fullerandco.com.au/8292519>

Split-level living, with verandahs off all the bedrooms and living areas and a beautiful treed outlook in all directions. Lots of room to entertain and freshly painted throughout.

- Timber floors throughout
- Fans in all bedrooms
- Landscaped gardens
- Verandahs off all bedrooms and living areas
- Large kitchen with gas cooking
- Set on the largest block in the Sienna Gardens complex.



Scot Fuller
02 5642 0177



Gail Fuller Jp
02 5642 0177

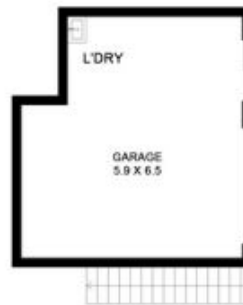
[For full version visit the website](https://www.fullerandco.com.au)



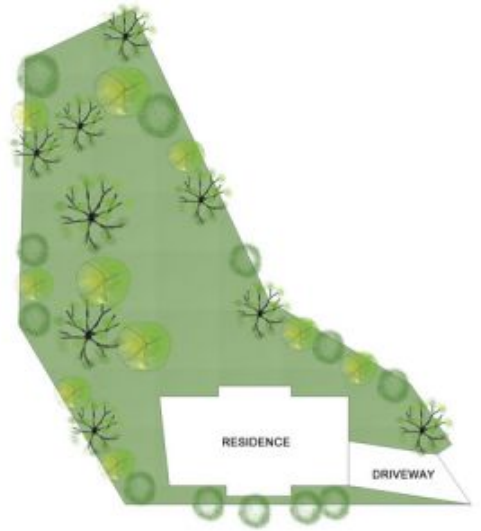
FIRST FLOOR



UPPER GROUND FLOOR



LOWER GROUND FLOOR



SITE PLAN
(NOT TO SCALE)

10 21-25 Cemetary Road Byron Bay

Floor Plan Disclaimer - Mable Drive (M2) floor plans / site plans are intended as an approximate guide only. No representations or warranties of any nature are given or intended and any person using this information other than as a guide should always rely on their own enquiries. Mable Drive property marketing services / 0413075034 / Photography, Floor plans, Videos, Aerial photography / www.mabledrive.com.au



APPROXIMATE AREAS	
INTERNAL FLOOR SPACE	- 131m ²
EXTERNAL FLOOR SPACE	- 40m ²
GARAGE	- 35m ²