






6/231 Fowlers Lane Bangalow NSW

4  3  6 

This beautifully renovated home perched up high in the Byron Bay Hinterland is available on a long term lease. It is set in lush green surroundings with lots of space, light, and breezes.

Type : House
Land Size : 6044 sqm
View : <https://www.fullerandco.com.au/8292765>

Property Features at a glance:

- High raked ceilings
- A stunning combination of concrete polished and timber floors throughout the home
- Master suite with large walk-in robe and ensuite
- Built-in robes to all additional bedrooms
- Air conditioning
- Modern appliances and gas cooking



Scot Fuller
02 5642 0177

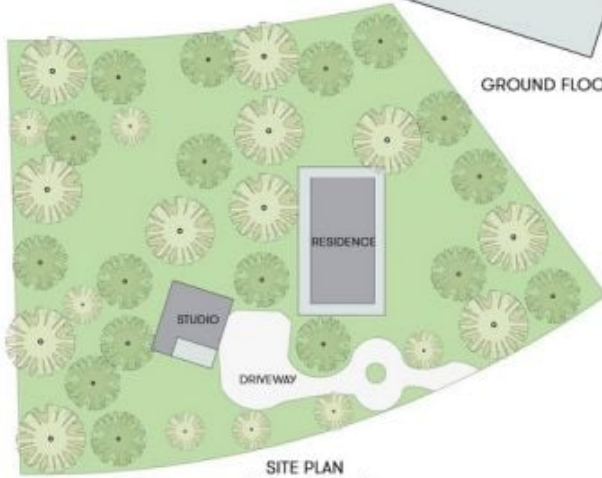


Jill Egroff
02 5642 0177

[For full version visit the website](https://www.fullerandco.com.au)



GROUND FLOOR



SITE PLAN
(NOT TO SCALE)



GROUND FLOOR

BANGALOW
6/231 Fowler's Lane



Internal: 195m²
Excludes all external structures
Eg: decks, patios, verandahs etc

FULLER
& co

Scale is metric. Indicative only. All information contained herein is obtained from sources we believe to be accurate. We cannot guarantee its accuracy. Interested persons should make enquiries on their own and verify the plan's representation of the building on site and not on reliance of council approval. It is for information only. All figures are approximate - do not scale - no liability accepted.